



CRUISE

 www.toureast.net



Contents

President's Message	3	<i>Penang</i>	34
Local Expertise, Global Reach	4	<i>Langkawi</i>	35
Perfect Moments, Always	5	<i>Kota Kinabalu</i>	36
Services in All Shapes & Sizes	6	Taiwan	38
MICE to Meet You	7	<i>Taipei</i>	41
Our Technology		<i>Kaohsiung</i>	42
<i>webConnect</i>	8	Korea	44
<i>Tour East Mobile PWA</i>	9	<i>Seoul</i>	47
Sustainably Yours	10	<i>Busan</i>	48
Ethical Mementos	11	<i>Jeju</i>	49
Singapore	12	Indochina	50
<i>Singapore City</i>	15	<i>Laos</i>	53
Indonesia	16	<i>Cambodia</i>	54
<i>Jakarta</i>	19	<i>Vietnam</i>	55
<i>Surabaya & Semarang</i>	20	Philippines	56
<i>Bali</i>	21	<i>Manila</i>	59
<i>Lombok</i>	22	<i>Palawan</i>	60
<i>Komodo</i>	23	<i>Bohol</i>	61
Thailand	24	Hong Kong	62
<i>Bangkok</i>	27	<i>Hong Kong</i>	65
<i>Phuket</i>	28	Our Team	67
<i>Samui</i>	29		
Malaysia	30		
<i>Kuala Lumpur</i>	33		



President's Message

Asia offers a wealth of ancient wonders and modern marvels. From the majestic remnants of ancient empires to the cutting-edge skylines that pierce the horizon, Asia's landscapes are an evocative symphony of the past and future coexisting perfectly. The bustling energy of teeming metropolises like Singapore, Bangkok, Hong Kong, Manila, and Seoul harmonise with the tranquil reverence of ancient temples and shrines.

Asia's iconic sites beckon as ports of call for most major cruise brands, inviting travellers to embark on captivating tours of ancient marvels and UNESCO World Heritage sites, ensuring firsthand experiences of unparalleled cultural wonders.

JTB Asia Pacific and the Tour East Group are beacons of excellence with a steadfast presence across Asia. With over a century of proven expertise, JTB has garnered a reputation for excellence. At the same time, Tour East has been the premier destination management company for over fifty years.

We provide a seamless blend of shore excursions, turnaround services, and pre-and post-cruise tours tailored for discerning cruise ship passengers at every port of call.

We value our global partnerships and work together to provide exceptional client experiences. Our success is linked to theirs. Unparalleled customer service, profound destination knowledge, and lasting connections are at the heart of our values.

Our people, their expertise, and unwavering dedication have been irreplaceable in crafting extraordinary experiences for many decades.



Hiroyuki "Keith" Kitagawa
President & CEO

Local Expertise Global Reach



Main Ports Map

JTB Asia Pacific and the Tour East Group are esteemed members of the distinguished Global DMC Network by JTB Group. These brands represent the pinnacle of travel excellence throughout Asia with a rich legacy that spans over a century.

Our team of travel professionals includes both local experts and highly knowledgeable expatriates. We are passionate about our destinations and offer comprehensive services across Asia.

Strong connections with local government agencies and port authorities demonstrate our ability to network and deliver seamless service at every port.

Our dedication lies in crafting bespoke cruise travel experiences. As such, we offer priority welcome arrangements, luxurious transportation, exclusive accommodations, immersive cultural experiences, and personalized adventures that foster meaningful connections with local communities.

We ensure a seamless journey at every port of call.

Our network maintains operating and representative offices in key cities to ensure consistently high-quality standards wherever you are.

Perfect Moments, Always



Being part of the Global DMC Network by JTB Group, these words are more than just a slogan.

We collaborate with our worldwide affiliates, industry partners and suppliers to develop innovative services and solutions that enable our customers to connect more deeply and meaningfully.

We contribute to creating sustainable communities and a more peaceful and interconnected planet.

The JTB Group continues its unwavering dedication, just as it has for the past 112 years, to provide unparalleled excitement, value, and satisfaction while continuously exploring new horizons. Concurrently, Tour East is the foremost destination management company, boasting over fifty years of excellence.

All network members are here to provide the legendary *Perfect Moments, Always*. Experiences that last forever.

As your one-stop Destination Management Company, we provide a single trusted face of accountability for a comprehensive suite of services for individual and group travelers:



Meet & Greet Services

We offer personalized welcomes for travelers, ensuring a smooth start to their journey.



Ground Transportation

Reliable transportation options for individuals or groups, ensuring a comfortable journey.



Accommodation

From budget to luxury, we provide diverse lodging options to suit every traveler's needs.



Sightseeing Tours

Expertly crafted tours showcasing the best of a destination, tailored for individuals and groups.



Cruises

Explore the seas with our diverse cruise options, offering both relaxation and adventure.



MICE

Seamless event organization for meetings and conferences, customized to unique requirements.



Special Interest & Educational Programs

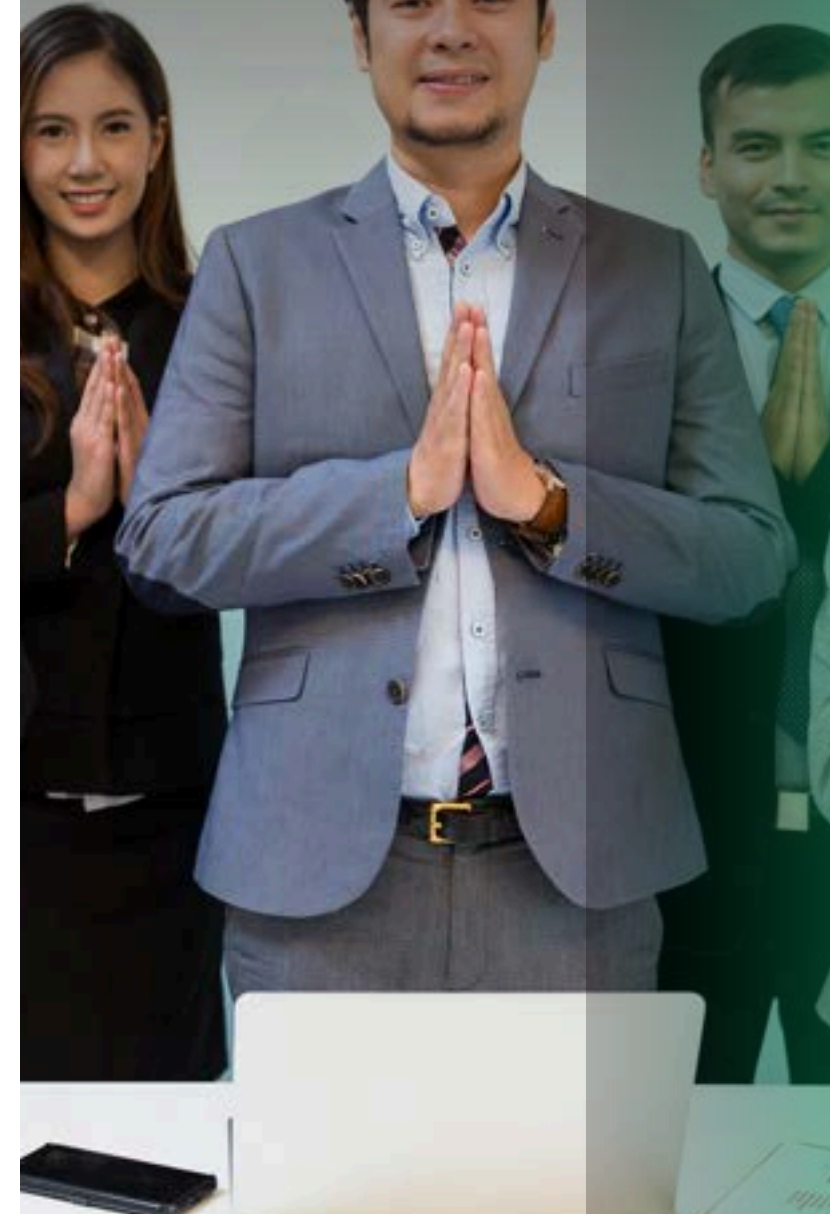
Tailored tours for specific interests or educational pursuits, combining leisure and learning.



Premium Lifestyle Experiences

Elevate your journey with exclusive activities, adding luxury to your travel experience.

Services in All Shapes & Sizes



MICE to Meet You

We are passionate about meetings, incentives, conferences, and exhibitions! Our goal is to integrate all aspects flawlessly, ensuring the success of your on-shore or hybrid event.

No matter your event size, occasion or budget, we possess a wealth of experience and all the relevant connections to offer an exciting range of accommodations, venues, ideas, and dedicated MICE management teams to help you bring it to life.



Support from concept to completion for every event.



Creative team events catering to every size and budget.



State-of-the-art Event Management Technology Solutions.



Experienced, resourceful and dedicated on-site management.



Full hospitality arrangements.



Pre- and Post-Programs.



Special interest tours and activities & Companion Programs.

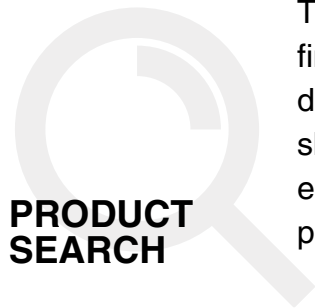


Indoor & Outdoor Team Building Activities.

Our Technology

WebConnect

Our online platform, WebConnect, provides B2B partners easy and efficient access to information, hotel rates, promotions, transfers, excursions, and other critical services in key countries. Booking shore services, pre- and post cruise arrangements for your clients is just a button press away.



PRODUCT SEARCH

The Product Search function effortlessly finds specific product details and descriptions. Agents can view, print and share the information in PDF format, ensuring convenient access to crucial product information.



TARIFF

Access and export quarterly/yearly tariffs effortlessly. Agents can conveniently view comprehensive tariff details for all services within a destination, streamlining the process for informed decision-making.



AVAILABILITY

Using the Availability function, quickly check service confirmability within each destination.

Agents can easily manage and monitor service availability, ensuring a smooth booking experience.



BOOKING

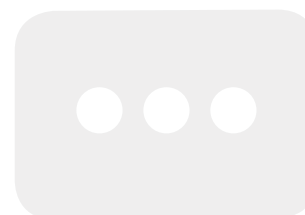
After identifying services that match the client's itinerary and budget, agents can effortlessly handle quotations and place bookings, ensuring efficient client service with just a few clicks.

Tour East's Progressive Web Application (PWA) – is our gateway to enhanced convenience and personalized service. This cutting-edge technology tool is designed to empower our clients from the moment they arrive at their destination. Let's explore the key features:



QR CODE INTEGRATION

Customers are provided with their QR code before departure or upon arrival, granting access to a plethora of information, such as updated itineraries, driver and guide information, schedules, comprehensive details, digital vouchers, and more. We go paperless!



INTERACTIVE SUPPORT

Our app provides a hassle-free way to contact our in-destination support team, which enables our clients to easily clarify details, receive more recommendations, or quickly seek assistance as needed.



TAILORED INFORMATION

Transfer Bookings: Check drop-off/pick-up locations and timings.
Tour Reservations: Access starting times, durations, detailed itineraries, maps, and the ability to leave reviews.
Ticket Purchases: Download tickets directly from the app for a hassle-free experience.



RECOMMEND PRODUCTS

Enhance your journey with our handpicked, authentic, and local suggestions. Delve into customizable add-ons like Day Tours, Attractions, Transfers, and Sightseeing, crafted to match your unique preferences

Our Technology

Tour East Mobile PWA



At the heart of our ethos lies a profound commitment to safeguarding our planet, nurturing its people, and enriching communities worldwide. Across our expansive network, this vision comes to life. In Japan, our esteemed partners at JTB Global Marketing & Travel Inc. have attained the prestigious Travelife-certified status. Inspired by their example, our affiliates across various Tour East destinations have embarked on a similar journey, striving towards collaborative partnerships prioritizing environmental stewardship and social responsibility.

Please visit our website for further details on Tour East's Sustainable Tourism Code of Conduct*.

The entire Global DMC Network by JTB Group is firmly committed to advancing the Sustainable Development Goals (SDG) established by the United Nations World Tourism Organization (UNWTO).

Together, we embrace these goals and let them drive positive change towards a future where sustainable tourism flourishes for the betterment of all.

*<https://www.toutheast.net/sustainability>

Sustainably Yours



Ethical Mementos



Tour East takes pride in presenting a thoughtfully curated range of merchandise that echos our core values and unwavering dedication to environmental responsibility. Sustainability remains paramount in our endeavours as a company committed to delivering exceptional service. Our partnerships with like-minded suppliers ensure that every product meets our strict sustainability standards, demonstrating our unwavering commitment to creating a more eco-friendly future.

Our merchandise goes beyond souvenirs; instead, it is a physical reminder of your unforgettable experiences while exploring Asia with Tour East.

By supporting local businesses and embracing eco-friendly practices, we minimise our environmental impact and contribute positively to the communities we visit.

Our collection of artisan crafts tells a story of conscious consumption and mindful travel. Cruise passengers can pre-book each item and will receive them upon arrival at their port of call.

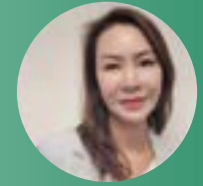
At Tour East, we firmly believe that every choice matters, and by selecting our sustainable souvenirs, you can make a meaningful impact on the world around you.



SINGAPORE
Passion Made Possible

Connect & Discover

Janice Hew
Head of Reservation, Sales
TOUR EAST SINGAPORE



For over fifty years, our esteemed team has been at the forefront of revolutionizing travel experiences in Singapore. At Tour East Singapore, we guarantee top-notch quality through meticulously curated overland tours and sightseeing adventures. Whether seeking exclusivity or luxury or for the avid explorer, we understand travellers' needs and strive to deliver excellence both within Singapore and across borders.



TOP PLACE

GARDENS BY THE BAY

Gardens by the Bay, Singapore's iconic green oasis, dazzles with futuristic Supertrees, the Cloud Forest, and the Flower Dome. This horticultural wonderland offers a surreal blend of nature and innovation.



TOP FOOD

HAINANESE CHICKEN RICE

Hainanese Chicken Rice, a culinary gem, features succulent poached chicken, fragrant rice, and savoury chilli sauce. This Singaporean staple epitomizes the country's diverse and delectable food scene.

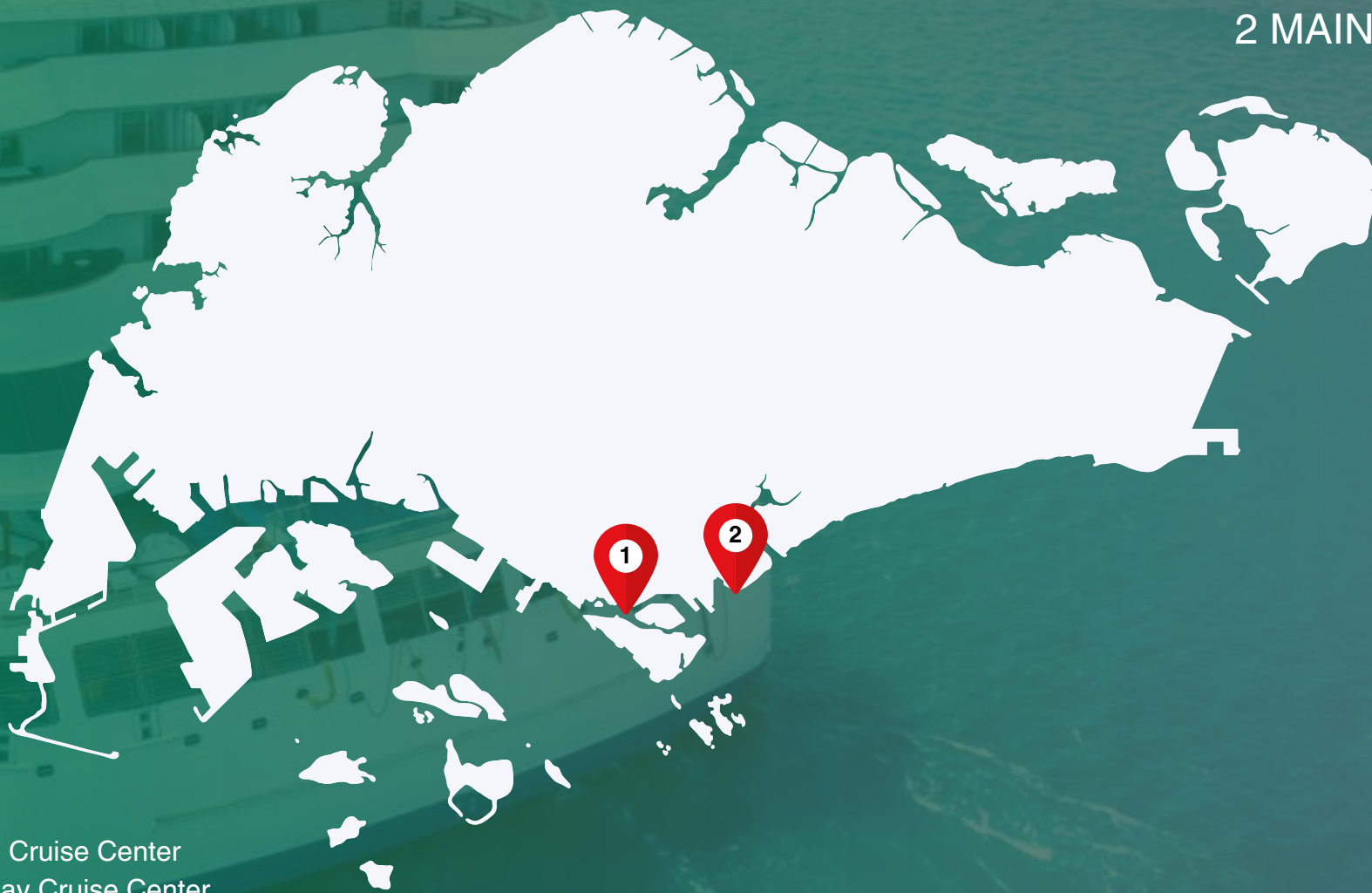


TOP EVENT

SINGAPORE GRAND PRIX

The Singapore Grand Prix, a thrilling Formula 1 night race, transforms the city into a high-speed spectacle. The electrifying event, coupled with concerts and festivities, attracts global visitors for a unique blend of adrenaline and entertainment.

CRUISE PORTS IN SINGAPORE 2 MAIN PORTS



- 1. Singapore Cruise Center
- 2. Marina Bay Cruise Center

SINGAPORE CITY

Singapore is a fascinating city-state that radiates modernity, prosperity, and a lively combination of international residents and locals who enjoy the finer things in life. With its diverse neighbourhoods and rich cultural heritage, Singapore stands out as one of the world's most dynamic and eclectic cities.

Port: Marina Bay Cruise Centre

Capacity: 6,800 Passengers

Port: Singapore Cruise Centre

Capacity: 2,500 Passengers



LITTLE INDIA

Little India is a vibrant cultural enclave with temples and mosques, street art, and brightly painted shophouses. The ethnic district is liveliest during Hindu celebrations like the Deepavali festival of lights.



KATONG & JOO CHIAT

Joo Chiat Road is a road in Katong and a residential conservation area in Singapore. It has won several architectural and heritage awards, including UNESCO Asia-Pacific Awards for Cultural Heritage Conservation at 125 Joo Chiat Road.



CHINATOWN

Nestled within Chinatown's maze of narrow streets lies a vibrant tapestry of experiences. Explore bustling Food Street for authentic culinary delights. Browse charming souvenir shops and indie boutiques showcasing Singapore's cultural heritage. Discover the dynamic enclave that is Chinatown today.



KAMPONG GLAM

Centred on busy Arab Street, Kampong Glam is known as Singapore's Muslim Quarter. Its 19th-century shophouses have been turned into stores selling textiles and casual restaurants serving spicy Malay and global fare.



THEME PARKS

Singapore's theme parks offer immersive experiences that blend culture, technology, and thrills. From Universal Studios' movie magic to Adventure Cove Waterpark's aquatic adventures, there's endless fun for all ages.



INDONESIA

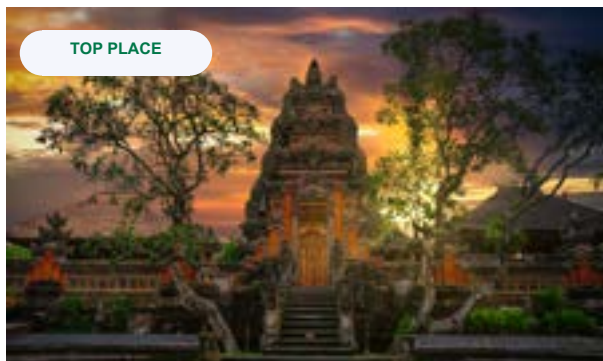
Wonderful Indonesia

Connect & Discover

Bagus Perbawa
Global Business Manager
TOUR EAST INDONESIA



Indonesia is the largest country in Southeast Asia. With over 17,000 islands and set on tectonic plates and volcanic grounds, the archipelago state has encompassed peoples and cultures of mainland Asia and Oceania. The result is a unique and welcoming diverse environment and society. Indonesia is awash with cultural and natural wonders, which continue to inspire us. Tour East Indonesia has created and delivered exceptional and awe-inspiring travel experiences for over 33 years. Tour East Indonesia's head office is located in Bali. And the Island of the Gods is the best locale to benefit from divine inspiration to provide these "Perfect Moments, Always."



UBUD

Ubud captivates with lush landscapes, ancient temples, and vibrant arts. The Monkey Forest, traditional dance performances, and artisan markets make it a top destination for cultural exploration.



NASI GORENG

Indonesia's national dish, Nasi Goreng, delights with aromatic fried rice, sweet soy sauce, and various accompaniments. This flavorful dish, often topped with a fried egg, showcases Indonesia's diverse culinary palette.



NYEPI

Nyepi, Bali's Day of Silence, is a unique cultural experience. The island shuts down for 24 hours of reflection and tranquility, with no activities, lights, or noise, allowing locals and visitors to participate in this spiritual and serene festival.

CRUISE PORTS IN INDONESIA 6 MAIN PORTS



- 1. Jakarta : Port of Tanjung Priok
- 2. Semarang : Port of Tanjung Emas
- 3. Surabaya : Port of Tanjung Perak
- 4. Bali : Port of Benoa
- 5. Lombok : Port of Lembar - Gilimas
- 6. Komodo Island : Komodo Island - Loh Liang / Rinca Island - Loh Buaya

JAKARTA

Jakarta, the vibrant capital of Indonesia, is a bustling metropolis known for its rich cultural heritage, diverse cuisine, and modern skyline. Home to over 10 million people, it offers a mix of traditional markets, historic landmarks like the National Monument, and contemporary attractions, reflecting Indonesia's dynamic character.

Port: Port of Tanjung Priok
Capacity: 4,000 Passengers



ANCOL BEACH

A popular recreational destination offering sandy shores, water sports, and entertainment facilities. It's part of the larger Ancol Dreamland complex, featuring theme parks, a golf course, and a marina.



OLD TOWN (KOTA TUA)

Old Town (Kota Tua) in Jakarta is a historic district filled with colonial-era buildings, museums, and vibrant street art. Visitors can explore its rich heritage, enjoy local cuisine, and experience cultural performances amidst its charming ambiance.



NATIONAL MONUMENT (MONAS)

A symbol of Indonesian independence and national pride, it commemorates the struggle for freedom and honors the nation's heroes. Visitors can ascend to the top for panoramic views of the city or explore the museum at its base.



BOGOR BOTANICA GARDEN

Established in 1817, it houses over 15,000 species of plants, including rare orchids and towering palms. Visitors can explore themed gardens, serene ponds, and a renowned orchid conservation center, making it a haven for nature enthusiasts.



TAMAN MINI INDONESIA INDAH (TMII)

Established in 1975, it spans over 250 acres, featuring pavilions, museums, and gardens representing each Indonesian province. Visitors can explore ethnic houses, enjoy cultural performances, and delve into Indonesia's rich heritage.

SURABAYA & SEMARANG

Surabaya, the bustling economic center of Eastern Java, is home to the nation's navy. Meanwhile, Semarang, affectionately called the "Venice of Java" by the Dutch, features picturesque rivers meandering through the city, reminiscent of the waterways of Italy's Venice.

Port: Port of Tanjung Emas (Semarang)

Capacity: 1,860 Passengers

Port: Port of Tanjung Perak (Surabaya)

Capacity: 4,000 Passengers



SAM POO KONG

Sam Poo Kong is a historic temple in Semarang, revered as a symbol of Chinese-Indonesian cultural ties. It features ornate architecture and holds significant religious and cultural importance.



BOROBUDUR TEMPLE

Borobudur Temple is a UNESCO World Heritage site, a magnificent Buddhist monument dating back to the 9th century. Its intricate stone carvings and stupas depict Buddhist cosmology.



MOUNT BROMO

Mount Bromo in Java is an iconic active volcano renowned for its otherworldly landscapes, including a vast caldera, smoking crater, and stunning sunrise views attracting adventurers and photographers alike.



LAWANG SEWU

Lawang Sewu is a grand colonial building in Semarang known for its thousand doors. It serves as a historic landmark, showcasing Dutch architecture and hosting cultural exhibitions.



SURABAYA HEROES MONUMENT

Surabaya Heroes Monument stands as a tribute to the bravery and sacrifice of those who fought in the Battle of Surabaya, symbolizing the city's resilience and spirit.

BALI

Renowned as the "Island of the Gods," Bali captivates with its enchanting traditional dances, vibrant ceremonies, rich arts and crafts, lavish beachfront resorts, and exhilarating nightlife. Everywhere you turn, intricate temples adorned with exquisite carvings await, adding to the island's allure and mystique.

Port: Port of Benoa
Capacity: 3,500 Passengers



BESAKIH TEMPLE

Besakih Temple, known as the "Mother Temple" of Bali, is a majestic complex on Mount Agung's slopes. It is a spiritual centre offering breathtaking views and intricate Balinese architecture.



KUTA BEACH

Kuta Beach in Bali is renowned for its golden sands, vibrant atmosphere, and world-class surfing waves. It's a popular destination for sunbathing, water sports, and vibrant nightlife.



TIRTA EMPUL TEMPLE

Tirta Empul Temple in Bali is a sacred Hindu site famous for its holy spring water pools, where visitors can participate in purification rituals amid stunning traditional Balinese architecture.



GARUDA WISNU KENCANA

Garuda Wisnu Kencana (GWK) in Bali is an iconic cultural park featuring the massive statue of Lord Vishnu riding Garuda. It showcases Balinese art, performances, and stunning vistas.



JATILUWIH

The enchanting Jatiluwih, a UNESCO-recognized site, where you'll witness the island's famed rice paddies. These terraced fields, a marvel of greenery, represent Bali's traditional agriculture and offer stunning panoramic views.

LOMBOK

Lombok, nestled among the Lesser Sunda Islands and bordered by the Lombok Strait, boasts rugged coastlines, sandy beaches, and majestic volcanic peaks. Among its notable landmarks is Mount Rinjani, Indonesia's second-highest volcano, adding to the island's allure and natural splendour.

Port: Port of Lembar - Gilimas
Capacity: 1,500 Passengers



GILI ISLANDS

Just off the northwest coast of Lombok are the Gili Islands – Gili Trawangan, Gili Air, and Gili Meno. These idyllic islands are famous for their pristine beaches, coral reefs, and laid-back atmosphere.



BEACHES

Lombok is home to some of Indonesia's most beautiful beaches, including Kuta Beach, Selong Belanak Beach, and Tanjung Aan Beach. These beaches are known for their white sand, clear waters, and excellent surfing and snorkeling opportunities.



MOUNT RINJANI

A prominent feature of Lombok's landscape, Mount Rinjani is a popular destination for trekking and hiking. The volcano's summit offers stunning views of the crater lake, Segara Anak, and the surrounding landscapes.



SASAK CULTURE

The majority of Lombok's population is of Sasak ethnicity, and visitors can experience Sasak culture through traditional villages, ceremonies, and crafts such as weaving and pottery.



TASTE LOCAL CUISINE

Don't miss the opportunity to savor delicious Sasak cuisine, including specialties like Ayam Taliwang (grilled chicken), Plecing Kangkung (water spinach salad), and Sasak rice dishes like Nasi Balap Puyung.

KOMODO

Komodo National Park, a UNESCO-designated treasure, boasts numerous islands adorned with stunning white and pink sand beaches, inviting mountains perfect for trekking, and vibrant coral reefs for unparalleled diving experiences. Notably, it is the sole destination worldwide where you can observe Komodo dragons in their natural habitat, offering an unforgettable encounter with these majestic creatures.

Port: Komodo Island - Loh Liang
Capacity: N/A
Port: Rinca Island - Loh Buaya
Capacity: N/A



KOMODO ISLAND

Komodo Island, famed for its Komodo dragons, is a UNESCO World Heritage site. It offers wildlife encounters, scenic landscapes, and opportunities for diving in vibrant coral reefs teeming with marine life.



PINK BEACH

Pink Beach in Komodo National Park captivates visitors with its unique pink sands, crystal-clear waters, and vibrant coral reefs, creating a stunning backdrop for snorkeling, diving, and relaxation in paradise.



RINCA ISLAND

Rinca Island, part of Komodo National Park, is a haven for wildlife enthusiasts. It's renowned for its population of Komodo dragons, rugged landscapes, and scenic trekking trails offering breathtaking views.

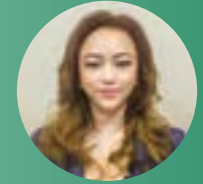


THAILAND

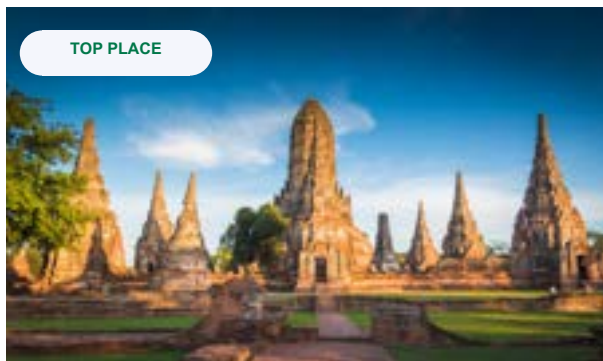
Amazing Thailand

Connect & Discover

Monthathip Kitkanchana (Teddy)
Director of Sales - International Markets
TOUR EAST GROUP



Thailand sets its sights on delighting travelers of every type, budget, and style. For half a century as of 2022, Tour East Thailand has been synonymous with excellence, crafting enduring memories for global inbound customers. With offices and partner agencies strategically positioned in all major tourist destinations, updated product offerings and in-destination customer support are guaranteed. Here's to the next 50 years of accolades and awards for exceptional travel experiences and personalized services!



AYUTTHAYA

Ayutthaya, a UNESCO World Heritage site, showcases ancient temples and palaces amid serene landscapes. The city's historical significance, evident in its ruins, makes it a must-visit destination for cultural enthusiasts.



PAD THAI

Pad Thai, Thailand's iconic stir-fried noodle dish, delights with a harmonious blend of flavors. The combination of rice noodles, tofu or shrimp, peanuts, lime, and tamarind sauce epitomizes Thai culinary mastery.



SONGKRAN WATER FESTIVAL

Songkran, Thailand's New Year celebration in April, transforms streets into a vibrant water war. Locals and tourists joyfully participate in water fights, parades, and cultural ceremonies, making it a lively and unforgettable experience.

CRUISE PORTS IN THAILAND 3 MAIN PORTS



1. Bangkok : Laem Chabang Port / Bangkok Port (Khlung Toei Port)
2. Phuket : Deep Sea Port / Patong Port / Visit Panwa Port
3. Samui : Port of Samui

BANGKOK

Bangkok represents a captivating blend of glistening gem-encrusted temples, renowned Thai massages, and yoga schools alongside world-class shopping centres, museums, and historical ruins. The cultural treasures stand in harmony with towering skyscrapers, crafting a vibrant and unparalleled cityscape found nowhere else.

Port: Laem Chabang Port

Capacity: 3,500 Passengers

Port: Bangkok Port (Khlong Toei Port)

Capacity: 1,000 Passengers



TRAIN TRACK MARKET

Embark on an exciting day tour from Bangkok to visit two iconic markets. Experience the unique MaeKlong Railway Market, where vendors swiftly clear goods as trains pass. Then, cruise to the vibrant Damern Saduak Floating Market.



CHINATOWN

Bangkok's Chinatown is a bustling district renowned for its vibrant street markets, authentic Chinese cuisine, ornate temples, and lively atmosphere, offering a fascinating blend of cultures and flavors.



BANGKOK CITY & TEMPLE

Explore Bangkok's finest sightseeing spots and temples, and immerse yourself in the rich cultural experiences that the city has to offer.



PATTAYA CITY TOUR

Embark on a Pattaya City tour, starting with Phratamnak Hill's panoramic view of Pattaya Bay. Visit Wat Khao Phra Bat and the iconic Big Buddha at Wat Phra Yai. Enjoy lunch at The Sky Gallery Restaurant before exploring Pattaya's Gems Gallery.



COOKING CLASS

Embark on a culinary adventure in Bangkok with a cooking class. Learn to prepare delicious Thai dishes, explore vibrant markets for fresh ingredients, and savor the flavors of authentic Thai cuisine.

PHUKET

Phuket, often called the 'Pearl of the South,' is Thailand's largest island. Rich in natural splendour, steeped in colourful history, and brimming with local allure, it is the gateway to numerous surrounding islands. This island paradise is a prime destination for venturing into the pristine southern beaches of Thailand.

Port: Deep Sea Port
Capacity: 3,000 Passengers

Port: Patong Port
Capacity: 3,000 Passengers

Port: Visit Panwa Port
Capacity: 3,000 Passengers



PROMTHER CAPE

Promthep Cape is Phuket's most famous and picturesque viewpoint, renowned for its stunning sunsets over the Andaman Sea. Visitors can enjoy panoramic vistas, coastal walks, and serene moments of tranquillity.



PHI PHI ISLAND

Phi Phi Island, a tropical paradise in Thailand, boasts turquoise waters, pristine beaches, and towering limestone cliffs. It's a haven for snorkeling, diving, beach relaxation, and vibrant island nightlife.



PHUKET OLD TOWN

A charming district filled with colorful Sino-Portuguese buildings, lively markets, hip cafes, and quaint shops, offering a glimpse into the island's rich history and culture.



PHUKET BIG BUDDHA

A majestic marble statue atop Nakkerd Hill, offering panoramic views of the island. It's a revered cultural landmark, symbolizing peace and providing spiritual reflection.



CHALONG TEMPLE

Chalong Temple, or Wat Chalong, in Phuket, is a revered Buddhist temple complex featuring ornate architecture, vibrant colours, and serene gardens. It's a spiritual sanctuary and cultural icon in southern Thailand.

SAMUI

Koh Samui stands out as a gem in the Gulf of Thailand, thanks to its pristine beaches, vibrant fishing communities, and tranquil atmosphere. This beloved destination is conveniently located near Thailand's bustling hubs, making it an ideal spot for families and couples looking for a peaceful retreat. Unlike its livelier neighbors, Samui offers a serene haven for relaxation and rejuvenation.

Port: Port of Samui
Capacity: 1,000 Passengers



SAMUI OFF-ROAD JUNGLE TOUR

A private off-road ride to Namuang Waterfall, then explore the Secret Buddha Garden. Visit Teepangkorn Temple for panoramic views.



NA MUANG WATERFALLS

A natural wonder, comprising two picturesque cascades set amidst lush jungle. Visitors can hike, swim, and enjoy the tranquil beauty of the surroundings.



ELEPHANT KINGDOM SANCTUARY

Discover the magic of Samui Elephant Kingdom! Located in Koh Samui, our sanctuary offers elephants a paradise to roam freely. Witness their bond with mahouts, explore our innovative Skywalk, and support our mission for elephant welfare!



ANG THONG NATIONAL MARINE PARK

Ang Thong National Marine Park, near Koh Samui, is a pristine archipelago of 42 islands boasting lush forests, hidden lagoons, and vibrant coral reefs, perfect for snorkeling, kayaking, and island hopping adventures.



BIG BUDDHA

The Big Buddha on Koh Samui is a monumental golden statue located at Wat Phra Yai temple. It's a revered religious site and offers panoramic views of the island.



MALAYSIA

Malaysia, Truly Asia

Connect & Discover

Emmiley Amadeus
Global Inbound Manager (International & Asia Market)
TOUR EAST MALAYSIA



Malaysia is a melting pot of cultures and ethnicities - rich in travel adventures and experiences. For over a decade, Tour East has guided visitors within this diverse destination, from the stunning beauty and scenery from the island of Borneo and the Cameron Highlands to historic Georgetown in Penang, or spectacular Kuala Lumpur. As a result, Malaysia offers the opportunity to experience many different holidays in one place. Through the professional team at Tour East, headquartered in Kuala Lumpur, you can be assured of premium knowledge and professional service.



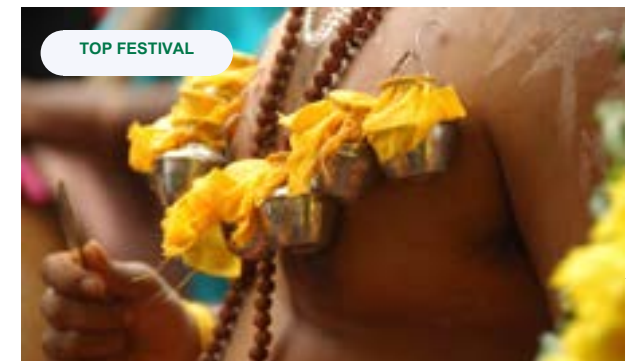
PETRONAS TOWERS

Kuala Lumpur's iconic Petronas Towers stand as a modern marvel. Tourists can ascend the SkyBridge for breathtaking views of the city, explore vibrant neighborhoods, and enjoy diverse cultural attractions.



NASI LEMAK

Nasi Lemak, Malaysia's beloved dish, features fragrant coconut rice, anchovies, peanuts, boiled eggs, and sambal. This flavorful combination, often served with various accompaniments, showcases Malaysia's rich culinary heritage.



THAIPUSAM

Thaipusam, celebrated at Batu Caves, is a mesmerizing Hindu festival. Devotees undertake a pilgrimage, often with elaborate kavadis (body piercings), expressing devotion to Lord Murugan. The spiritual energy makes it a captivating cultural experience.

CRUISE PORTS IN MALAYSIA 4 MAIN PORTS



- 1. Kuala Lumpur : Port Klang
- 2. Penang : The Swettenham Pier Cruise Terminal
- 3. Langkawi : Langkawi Cruise Terminal
- 4. Kota Kinabalu : Kota Kinabalu Port

KUALA LUMPUR

Kuala Lumpur is the dynamic capital of Malaysia, where modernity and rich cultural heritage blend seamlessly. The city is renowned for its exceptional shopping, diverse culinary scene, iconic landmarks, and exciting activities, all of which promise an unforgettable experience. Kuala Lumpur's proximity to breathtaking natural wonders enhances its appeal, offering visitors an all-encompassing adventure.

Port: Port Klang
Capacity: 3,500 Passengers



BATU CAVES

The majestic Batu Caves, a revered Hindu sanctuary in Kuala Lumpur, features ancient limestone caves and temples. Visitors are invited to ascend vibrant staircases and marvel at the magnificent golden statue of Lord Murugan.



BUKIT BINTANG

Bukit Bintang is a bustling shopping and entertainment district known for its upscale malls, vibrant street markets, eclectic dining options, and lively nightlife scene.



HOP-ON HOP-OFF KL

Discover Kuala Lumpur's iconic landmarks and vibrant neighborhoods with a Hop-On Hop-Off tour. Enjoy the flexibility to explore at your own pace while learning about the city's rich culture and history.



CENTRAL MARKET

A cultural hub offering traditional Malaysian arts, crafts, and cuisine. This historic landmark showcases local heritage through its vibrant stalls and cultural performances.



GENTING HIGHLANDS

Genting Highlands, Malaysia's premier hill resort, offers a cool escape with attractions like theme parks, casinos, shopping malls, and cable car rides, along with panoramic views of the surrounding mountains.

PENANG

Penang, also known as the pearl of the Orient, is one of the most touristic locations in Malaysia. Penang is a vibrant state, with its capital, George Town, having the rare distinction of being a UNESCO World Heritage Site. It is a true melting pot of cultures with its blend of Eastern and Western influences. Retaining many of the values adopted during its era of British rule, Penang bears a charm that is unique to its elf.

Port: The Swettenham Pier Cruise Terminal
Capacity: 12,000 Passengers



KEK LOK SI

Kek Lok Si, Penang's iconic hilltop temple, boasts stunning Buddhist architecture, including the towering Pagoda of Ten Thousand Buddhas and the massive bronze statue of Kuan Yin, Goddess of Mercy.



CHEONG FATT TZE

Cheong Fatt Tze, or the Blue Mansion, is a majestic 19th-century heritage mansion in Georgetown, Penang. Renowned for its indigo-blue façade and elaborate architectural details, it offers guided tours showcasing its rich history.



OLD COLONIAL BUILDING, GEORGETOWN

Georgetown's old colonial buildings showcase the city's rich history, blending British, Chinese, and Malay influences. These architectural treasures offer a glimpse into Penang's colonial past and cultural diversity.



TRISHAW RIDE, GEORGETOWN

Experience Georgetown's charm with a trishaw ride, a nostalgic journey through its vibrant streets, historic landmarks, and colorful neighborhoods, offering a unique way to explore the city's rich culture and heritage.



PENANG HILL

Penang Hill, a scenic retreat, offers panoramic views of Penang Island. Visitors ascend via a funicular railway to explore lush gardens, historic colonial buildings, and serene temples.

LANGKAWI

Langkawi is an archipelago in the Andaman Sea consisting of 104 beautiful islands. It is situated just 30 km from the northwestern shores of mainland Malaysia, making it an easily accessible tropical paradise. The island is surrounded by sun-drenched beaches, lush rainforests, and duty-free shopping, making it the perfect holiday destination. It effortlessly combines natural beauty with modern amenities, providing visitors with the ultimate escape.

Port: Langkawi Cruise Terminal
Capacity: 3,000 Passengers



MANGROVE & CAVE EXPLORING

Explore Langkawi's mangroves and caves, immersing in its rich ecosystem. Glide through serene waterways, witness diverse wildlife, and venture into mysterious caves, revealing the island's natural beauty and hidden treasures.



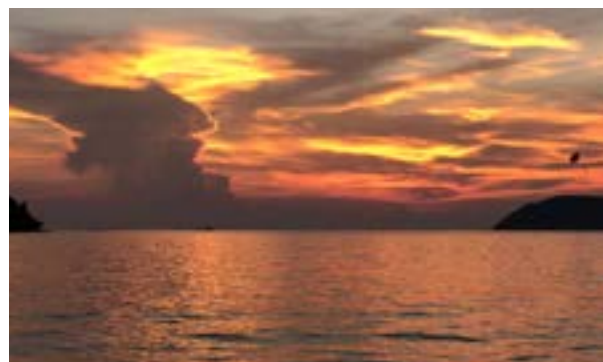
LANGKAWI SKY BRIDGE

The Langkawi Sky Bridge is an iconic architectural marvel offering panoramic views of Langkawi's lush landscapes and the Andaman Sea. It's a must-visit destination for breathtaking vistas and memorable experiences.



KILIM GEOFOREST

Kilim Karst Geoforest Park in Langkawi is a UNESCO-listed site featuring mangrove forests, limestone cliffs, and diverse wildlife. Boat tours offer a glimpse into its natural wonders and unique ecosystem.



LANGKAWI SUNSET CRUISE

Embark on a Langkawi Sunset Cruise for a romantic and scenic journey across the Andaman Sea. Witness breathtaking sunsets, enjoy refreshing drinks, and unwind amidst the tranquil beauty of the island.



LANGKAWI CABLE CAR

The Langkawi Cable Car ascends to Gunung Mat Cincang, offering spectacular views of the rainforest, mountains, and nearby islands. It's an exhilarating experience providing unmatched vistas of Langkawi's natural beauty.

KOTA KINABALU

Sabah is blessed with diverse nature, unique cultures, thrilling adventures, stunning beaches, and delicious cuisine for adventurous taste buds.

Visitors to Sabah will be amazed by the many places to see and activities to enjoy.

Exploring Sabah's culture and traditions will provide an opportunity to create sweet memories that will last a lifetime.

Port: Kota Kinabalu Port
Capacity: 5,000 Passengers



PROBOSCIS MONKEY SANCTUARY

Visit the Labuk Bay Proboscis Monkey Sanctuary to observe these unique primates in their natural habitat, known for their distinctive large noses and lively antics.



KUNDASANG DAIRY FARM

Explore the picturesque Kundasang Dairy Farm, nestled amidst the scenic landscapes of Mount Kinabalu. Enjoy fresh dairy products, scenic views, and opportunities for farm tours and activities.



MOUNT KINABALU

Embark on an adventure to climb Southeast Asia's highest peak or explore its foothills and surrounding trails for stunning views and diverse flora and fauna.



MARI-MARI CULTURAL VILLAGE

Immerse yourself in the diverse cultures of Sabah's indigenous tribes at the Mari-Mari Cultural Village, where you can experience traditional customs, dances, and crafts.



RAFFLESIA SPOTTING

Embark on an unforgettable journey through the lush Malaysian tropical forest to witness the captivating beauty of the Rafflesia flower, a botanical wonder found exclusively in Southeast Asia.



*Langkawi
Malaysia*



TAIWAN

The Heart of Asia

Connect & Discover

Nao Yoshida
Manager
TOUR EAST TAIWAN



With a professional multilingual team, Tour East Taiwan always delivers to and beyond expectations. An island that offers increasing appeal to seasoned travellers, Taiwan provides cultural and natural experiences from coast to coast. Excelling at delivering unique and personalised travel programmes, Tour East Taiwan embraces all the destination offers, emphasising culture, food, and adventure programs.



TOP PLACE

TAROKO GORGE

Taroko Gorge, Taiwan's stunning marvel, showcases marble cliffs, emerald waters, and lush forests. Hike its scenic trails, cross suspension bridges, and explore the Eternal Spring Shrine for a captivating nature experience.



TOP FOOD

NIGHT MARKET

Taiwan's vibrant night markets offer a culinary extravaganza. Indulge in stinky tofu, bubble tea, and savory oyster omelets. The diverse street food scene captures the essence of Taiwan's gastronomic allure.



TOP FESTIVAL

LANTERN FESTIVAL IN PINGXI

The Lantern Festival in Pingxi, Taiwan, illuminates the sky with colorful lanterns. Visitors release personalized lanterns, each carrying wishes, creating a mesmerizing spectacle against the backdrop of mountains, making it a magical cultural celebration.

CRUISE PORTS IN TAIWAN 2 MAIN PORTS



- 1. Taipei : Port of Keelung
- 2. Kaohsiung : Port of Kaohsiung

TAIPEI

Taipei captivates as a remarkable modern metropolis boasting an array of historical landmarks, renowned night markets, vibrant shopping districts, and cultural treasures like modern coffee houses, museums, and an electrifying nightlife.

Port: Port of Keelung
Capacity: N/A



SHIFEN WATERFALL

A stunning natural wonder, often referred to as the "Little Niagara of Taiwan." Visitors can admire its majestic cascades and lush surroundings amidst the tranquil forest setting.



CKS MEMORIAL

The CKS Memorial Hall in Taipei is a grand monument dedicated to Chiang Kai-shek, Taiwan's former president. It stands as a symbol of democracy and honors his contributions to the nation.



LUNGSAN TEMPLE

A historic Buddhist temple dating back to the 18th century, renowned for its ornate architecture, intricate carvings, and vibrant religious ceremonies.



SANXIA ZUSHI TEMPLE

Sanxia Zushi Temple is a revered Taoist temple, renowned for its exquisite Qing Dynasty architecture, intricate wood carvings, and vibrant religious festivals, attracting worshippers and visitors alike.



HUALIEN

Hualien, located on Taiwan's east coast, is renowned for its stunning natural beauty, including Taroko Gorge National Park, pristine beaches, and picturesque landscapes, offering outdoor adventures and cultural experiences.

KAOHSIUNG

Kaohsiung is situated on the southwestern coast of Taiwan, facing the Taiwan Strait. It is surrounded by mountains to the northeast and the South China Sea to the southwest. It is the third-largest city in Taiwan and serves as a major port and industrial hub.

Port: Port of Kaohsiung
Capacity: N/A



PIER-2 ART CENTER

An artsy district with colorful graffiti, sculptures, and art installations. It features galleries, shops, and cafes, providing a creative and cultural space for visitors.



FO GUANG SHAN BUDDHA MUSEUM

One of the largest Buddhist museums in the world, showcasing Buddhist art, artifacts, and teachings. The museum is located in nearby Dashu District and houses a giant statue of Buddha.



LOVE RIVER

A scenic river that runs through the city, Love River is a popular spot for leisurely strolls, boat rides, and enjoying the waterfront ambiance. The area is illuminated at night, creating a romantic atmosphere.



LIUHE NIGHT MARKET

One of the most famous night markets in Kaohsiung, Liuhe Night Market offers a wide variety of Taiwanese street food, local snacks, and unique souvenirs.

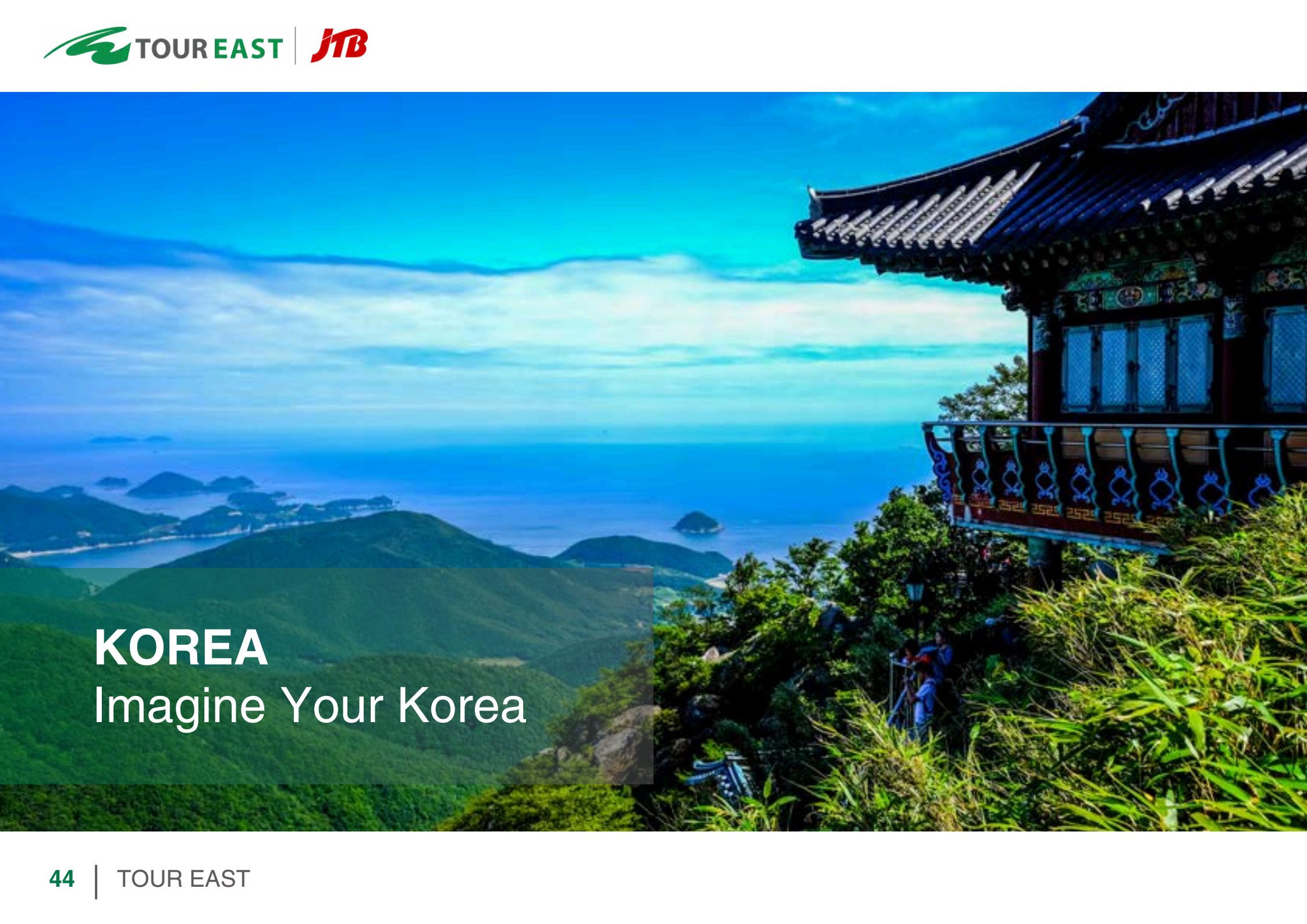


85 SKY TOWER

Also known as the Tuntex Sky Tower, this iconic skyscraper is one of the tallest buildings in Taiwan and offers panoramic views of the city from its observation deck.



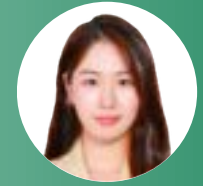
Zhengbin Fishing Port
Taiwan



KOREA
Imagine Your Korea

Connect & Discover

Jinsil Lee (Lily)
Manager
TOUR EAST KOREA



Korea has emerged as a tourist magnet packed with experiences from cultural to culinary and natural settings to modern-day entertainment. Tour East Korea provides extensive local knowledge and know-how to deliver exceptional and personalised travel programs to all types of travellers. Tour East Korea's unique offerings and services create truly memorable experiences, whether an explorer or a traveller seeking to blend old and new.



TOP PLACE

GYEONGBOKGUNG PALACE

Gyeongbokgung, Seoul's grand palace, showcases Korea's royal history. Explore its majestic halls, traditional architecture, and the changing of the guard ceremony, providing an immersive journey into the country's regal past.



TOP FOOD

KOREAN BBQ

Korean BBQ, a gastronomic delight, allows diners to grill marinated meats at their table. Enhanced by flavorful side dishes like kimchi, the communal dining experience in bustling restaurants is a must-try culinary adventure.



TOP FESTIVAL

CHERRY BLOSSOM SEASON IN JINHAE

Jinhae's Cherry Blossom Festival transforms the city into a pink wonderland every spring. The breathtaking blooms along Yeojwacheon Stream create a mesmerizing backdrop for cultural performances, fireworks, and a joyous celebration of nature's beauty.

CRUISE PORTS IN KOREA 3 MAIN PORTS



- 1. Seoul : Incheon International Ferry Terminal
- 2. Busan : Busan International Port
- 3. Jeju Island : Jeju International Port

SEOUL

Seoul is an enchanting city that seamlessly blends history and modernity, making it a must-visit destination for travellers. With its rich history, vibrant culture, delicious cuisine, diverse shopping, and exciting entertainment, Seoul offers many enriching experiences for visitors to explore and enjoy.

Port: Incheon International Ferry Terminal
Capacity: 3,000 Passengers



GYEONGBOKGUNG PALACE

Seoul's iconic royal palace, showcases traditional Korean architecture and history. Visitors can explore its majestic halls, tranquil gardens, and witness ceremonial changing of the guard.



DDP (DONGDAEMUN DESIGN PLAZA)

A futuristic architectural marvel in Seoul. It's a hub for design, culture, and innovation, featuring exhibitions, events, and cutting-edge design shops, drawing visitors worldwide.



N SEOUL TOWER

A landmark in South Korea's capital, offers panoramic views of Seoul. It's a cultural icon, featuring observation decks, restaurants, and love locks, attracting visitors from around the world.



BUKCHON HANOK VILLAGE

Bukchon Hanok Village, nestled in the heart of Seoul, preserves traditional Korean homes (hanok) amidst modernity. Wander through narrow alleyways, experience cultural workshops, and admire the architectural charm of the past.



SEOUL JOGYESA TEMPLE

Jogyesa Temple in Seoul is a serene Buddhist sanctuary amidst the city's hustle and bustle. It's known for its vibrant lanterns, ancient trees, and tranquil atmosphere, offering visitors a peaceful retreat.

BUSAN

Busan is a city that encapsulates diverse charms, making it worth visiting in South Korea. Its rich natural landscapes, maritime culture, historical landmarks, and a blend of modern urban life make it a great place to live. The refreshing sea and fresh seafood provide immense delight for food enthusiasts.

Port: Busan International Port
Capacity: 1,350 Passengers



HAEUNDAE BLUE LINE PARK (SKY CAPSULE)

Haeundae Blue Line Park, also known as the Sky Capsule, offers panoramic views of Haeundae Beach and the surrounding area from its elevated platform. It's a popular spot for taking in breathtaking vistas of Busan's coastline.



HAEDONG YONGGUNGSA TEMPLE

Haedong Yonggungsa Temple is a picturesque seaside temple in Busan, renowned for its stunning ocean views and unique coastal setting. It's a popular destination for both spiritual reflection and scenic exploration.



HAEUNDAE BEACH

The most famous seaside destination, renowned for its golden sands, crystal-clear waters, and vibrant atmosphere, attracting sunseekers and water sports enthusiasts alike.



HAEUNDAE DONGBAEKSEOM ISLAND

A scenic oasis known for its coastal trails, lush greenery, and stunning views of the sea. It's a tranquil escape offering relaxation and exploration amidst nature's beauty.



GAMCHEON CULTURE VILLAGE

Gamcheon Culture Village, also known as the "Machu Picchu of Busan," is a vibrant hillside neighborhood adorned with colorful houses, street art, and cultural attractions, offering visitors a unique and artistic experience.

JEJU

Jeju Island, from stunning beaches and enigmatic volcanic terrain to lush forests and delectable seafood cuisine, caters to a wide range of interests. Jeju Island seamlessly blends nature and culture, allowing you to find relaxation and adventure in one place.

Port: Jeju International Port
Capacity: 2,829 Passengers



CHEONJEYEON WATERFALL

A breathtaking natural wonder surrounded by lush vegetation and scenic landscapes. It's a serene oasis offering visitors a tranquil escape into nature's beauty.



JUSANGJEOLLI CLIFF

A mesmerizing geological formation of hexagonal basalt columns created by volcanic activity. It's a picturesque spot offering dramatic coastal scenery and stunning sunset views.



SEONGSAN SUNRISE PEAK

Seongsan Sunrise Peak is a UNESCO World Heritage site famous for its stunning sunrise views over the crater rim. It's a popular destination for hiking and photography enthusiasts.



DRAGON HEAD (YONGDUAM) ROCK

Yongduam Rock, also known as Dragon Head Rock, is a unique natural formation resembling the head of a dragon rising from the sea. It's a popular landmark offering stunning coastal views.



YAKCHEONSA TEMPLE

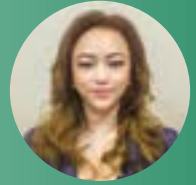
Yakcheonsa Temple is a majestic Buddhist temple known for its serene ambiance and beautiful architecture. It's a peaceful retreat where visitors can experience traditional Korean spirituality amidst natural surroundings.



INDOCHINA

Connect & Discover

Monthathip Kitkanchana (Teddy)
Regional Director of Sales & Marketing -
International Market
TOUR EAST GROUP



Discover the unparalleled beauty of Indochina with Tour East. Specializing in Laos, Cambodia, and Vietnam, we offer bespoke travel experiences that immerse you in the region's rich culture, history, and natural wonders. Our expertise extends to curated cruises along the majestic Mekong River, where you can explore ancient temples, bustling markets, and picturesque landscapes from the comfort of a luxury vessel. Whether you're seeking adventure, relaxation, or cultural immersion, Tour East ensures every detail of your journey is meticulously planned, allowing you to create unforgettable memories in Indochina.



LAOS : LUANG PRABANG

This UNESCO World Heritage site is known for its well-preserved Buddhist temples, charming colonial architecture, vibrant night markets, and serene natural surroundings. Luang Prabang offers a unique blend of cultural heritage, spirituality, and natural beauty, making it a must-visit destination in Laos.



CAMBODIA : AMOK

Amok is a quintessential Cambodian dish featuring fish or chicken simmered in a creamy coconut milk curry infused with lemongrass, turmeric, and kaffir lime leaves. The fragrant mixture is traditionally steamed in banana leaves, resulting in a rich and flavorful dish that is beloved by locals and visitors alike.



VIETNAM : TET

Tet Nguyen Dan, or Tet, is Vietnam's Lunar New Year celebration, marking the arrival of spring. It's a time for family reunions, feasting on traditional foods like banh chung, visiting temples, giving lucky money in red envelopes, and enjoying fireworks and colorful decorations. Tet is Vietnam's most important holiday.

CRUISE PORTS IN INDOCHINA 6 MAIN PORTS

Cambodia

1. Sihanoukville : Sihanoukville Autonomous Port

Vietnam

2. Ho Chi Minh City : Phu May Port
3. Nha Trang : Cau Da Port
4. Da Nang : Tien Sa port
5. Hue : Chan May
6. Hanoi : Halong International Cruise Port (Bai Chay Port)

LAOS

Laos, a landlocked Southeast Asian gem, boasts stunning landscapes, serene rivers, and a rich cultural heritage. A cruise along the Mekong River offers an unforgettable journey through this picturesque country. Glide past lush jungles, remote villages, and ancient temples while immersing yourself in the tranquil rhythm of river life.

Port: N/A
Capacity: N/A



VIENTIANE

Discover the capital city's French colonial architecture and landmarks like the Patuxai Monument and Wat Si Saket. Experience the Mekong River's rhythm of life and the vibrant energy of bustling markets, all in the city's laid-back vibe.



PAKSE

Discover the Olaven Plateau, Tad Fane Waterfall, coffee plantations, Wat Phou temple complex, Mekong River, Si Phan Don (4,000 Islands), Khone Phapheng Falls, ethnic minority cultures, and river cruises.



LUANG PRABANG

UNESCO World Heritage city, ancient temples, Mekong River, vibrant night markets, traditional crafts, serene atmosphere, almsgiving ceremonies, stunning waterfalls, hill tribe villages, cultural festivals.



VANG VIENG

Karst landscapes, Nam Song River, adventure activities, tubing, cave exploration, Blue Lagoon, hot air ballooning, zip-lining, backpacker scene, scenic viewpoints, traditional Lao villages.



SAVANNAKHET

French colonial architecture, St. Teresa Cathedral, Kaysone Phomvihane Memorial, Dinosaur Museum, That Ing Hang Stupa, Mekong River, relaxed ambiance, riverside promenade, traditional markets, cultural heritage sites.

CAMBODIA

Cambodia, a country rich in history and culture, offers a captivating cruise experience along the mighty Mekong River. Sail past lush landscapes, ancient temples, and bustling riverfront towns while immersing yourself in Cambodia's vibrant culture and serene countryside. From the majestic Angkor Wat to the charming floating villages, a Mekong River cruise in Cambodia promises an unforgettable journey through this enchanting land.

Port: Sihanoukville Autonomous Port
Capacity: N/A



PHNOM PENH

Royal Palace, Silver Pagoda, Tuol Sleng Genocide Museum, Mekong River, bustling markets, street food, Wat Phnom, National Museum, Killing Fields, Independence Monument.



BATTAMBANG

French colonial architecture, Bamboo Train, Bat Cave, ancient temples, rice paddies, Phare Ponleu Selpak circus, Banan Temple, Sangker River, traditional villages, rice paper making.



SIEM REAP

Angkor Wat, ancient temples, vibrant markets, Pub Street nightlife, Khmer cuisine, Tonle Sap Lake, cultural shows, silk weaving, artisan workshops, traditional Apsara dance.



SIHANOUKVILLE

Beaches, island hopping, snorkeling, scuba diving, nightlife, fresh seafood, Serendipity Beach, Otres Beach, Ream National Park, Koh Rong Island, water sports.



KAMPOT

French colonial buildings, Kampot Pepper, Bokor National Park, river cruises, salt fields, caves, crab market, Durian Roundabout, Teuk Chhou Rapids, countryside biking, pepper farms.

VIETNAM

Vietnam, a country of breathtaking beauty and rich cultural heritage, offers a captivating cruise experience along its stunning coastline. Sail past the dramatic limestone karsts of Halong Bay, explore the bustling floating markets of the Mekong Delta, and immerse yourself in the vibrant cities of Hanoi and Ho Chi Minh City. A Vietnam cruise promises an unforgettable journey through this enchanting land.

Port: Ho Chi Minh City : Phu May Port

Capacity: N/A

Port: Nha Trang : Cau Da Port

Capacity: N/A

Port: Da Nang : Tien Sa Port

Capacity: N/A

Port: Hue : Chan May Port

Capacity: N/A

Port: Hanoi : Halong International Cruise Port (Bai Chay Port)

Capacity: N/A



HO CHI MINH CITY

Formerly Saigon, Notre Dame Cathedral, War Remnants Museum, Ben Thanh Market, Cu Chi Tunnels, Mekong Delta tours, bustling streets.



HOI AN

Ancient town, UNESCO World Heritage site, lantern-lit streets, Japanese Covered Bridge, Thu Bon River, tailor shops, An Bang Beach, My Son Sanctuary.



HALONG BAY

Halong Bay, a UNESCO World Heritage Site in Vietnam, captivates with its emerald waters, towering limestone islands, and mystical caves, offering a breathtaking and serene natural landscape for exploration and discovery.



HANOI

Capital city, Old Quarter, Hoan Kiem Lake, Temple of Literature, French colonial architecture, water puppet shows, street food, Ho Chi Minh Mausoleum.



PHILIPPINES

Love the Philippines

Connect & Discover

Fatima Villa
Global Inbound Senior Supervisor
TOUR EAST PHILIPPINES



The Philippines has over 7,500 islands, offering unparalleled biodiversity and travel experiences of all types and budgets. Tour East Philippines delivers an extensive range of tailored, experienced-based travel programs from both Manila and Cebu operation centres. A multilingual team of tour guides also means that visitors of all nationalities can be cared for with world-renowned Filipino style and gracious hospitality. The Philippines is distinguished for its pristine beaches, crystal waters, colourful customs, delicious food, lively entertainment, and wonderful people. Unsurprisingly, people who have visited the Philippines have fallen in love with the country.



PALAWAN'S EL NIDO

El Nido, nestled in Palawan, boasts pristine beaches, hidden lagoons, and dramatic limestone cliffs. This tropical paradise offers a diverse array of marine life and island-hopping adventures, making it a top destination for nature lovers.



ADOBO

Adobo, the Philippines' quintessential dish, showcases marinated meats, often chicken or pork, simmered in soy sauce, vinegar, and garlic. Its savory-sweet flavor, combined with a hint of tanginess, exemplifies Filipino culinary excellence.



SINULOG IN CEBU

Sinulog, celebrated in Cebu, is a dynamic festival honoring the Santo Niño. Colorful street parades, traditional dances, and vibrant processions characterize this lively event, attracting both devotees and tourists for a joyous cultural celebration.

CRUISE PORTS IN PHILIPPINES 3 MAIN PORTS



- 1. Manila : Port of Manila
- 2. Palwan : El Nido Port
- 3. Bohol : Tagbilaran City Tourist Port

MANILA

Manila is the capital city of the Philippines and serves as the country's economic, political, social, and cultural hub. Manila is located on the western side of Luzon, the largest island in the Philippines. It is situated along the eastern shore of Manila Bay, with the Pasig River running through the city.

Port: Port of Manila
Capacity: N/A



RIZAL PARK (LUNETA)

A historical park dedicated to the country's national hero, Dr. Jose Rizal. The park features the Rizal Monument, gardens, and historical markers.



NATIONAL MUSEUM OF THE PHILIPPINES

Located in Rizal Park, the museum showcases the country's cultural, historical, and artistic heritage.



INTRAMUROS

The historic walled city, Intramuros, is home to colonial-era buildings, churches, and forts. Key attractions include Fort Santiago, San Agustin Church (a UNESCO World Heritage Site), and Casa Manila.



MANILA OCEAN PARK

A marine-themed park with an oceanarium, interactive exhibits, and live animal shows.



ENTERTAINMENT AND SHOPPING

Manila offers a vibrant nightlife, entertainment options, and a diverse culinary scene. Popular shopping destinations include SM Mall of Asia, Greenbelt Mall, and Divisoria, catering to various tastes and budgets.

PALAWAN

Palawan is an archipelago comprising the main island and several smaller surrounding islands. It is located between the South China Sea to the northwest and the Sulu Sea to the southeast. Palawan is known for its stunning natural beauty, diverse ecosystems, and pristine beaches.

Port: El Nido Port
Capacity: N/A



EL NIDO

Known for its stunning limestone cliffs, turquoise waters, and pristine beaches, El Nido is a popular destination for island-hopping tours, diving, and snorkeling.



TUBBATAHA REEFS NATURAL PARK

Another UNESCO World Heritage Site, Tubbataha Reefs Natural Park is a marine protected area known for its biodiversity, including coral reefs, marine life, and endangered species.



PUERTO PRINCESA UNDERGROUND RIVER

A UNESCO World Heritage Site and one of the New Seven Wonders of Nature, the Puerto Princesa Underground River is a navigable underground river that flows through a limestone cave.



CORON

Famous for its crystal-clear waters, shipwreck diving sites, and beautiful lagoons, Coron offers breathtaking views and opportunities for underwater exploration.



ADVENTURE AND ECO-TOURISM

Palawan offers a wide range of outdoor activities and eco-adventures, including hiking, trekking, kayaking, and wildlife watching. The province's diverse ecosystems provide opportunities for ecotourism and nature conservation efforts.

BOHOL

Bohol is an island province in the Central Visayas region of the Philippines. It is known for its stunning natural attractions, rich cultural heritage, and diverse ecosystems. Bohol is the tenth largest island in the Philippines and is located southeast of Cebu Island. Several smaller islands, including Panglao, Balicasag, and Pamilacan, surround it.

Port: Tagbilaran City Tourist Port
Capacity: N/A



PANGLAO ISLAND

Connected to Bohol by a bridge, Panglao Island is famous for its white sand beaches, crystal-clear waters, and vibrant coral reefs. Alona Beach and Dumaluan Beach are popular swimming, snorkeling, and diving spots.



TARSIER SANCTUARY

Bohol is home to the Philippine tarsier, one of the world's smallest primates. The Tarsier Conservation Area in Corella allows visitors to observe these adorable creatures in their natural habitat.



CHOCOLATE HILLS

One of the most iconic attractions in the Philippines, the Chocolate Hills are a series of cone-shaped hills covered in green grass that turn brown during the dry season, resembling chocolate kisses.



BILAR MAN-MADE FOREST

A dense mahogany forest spanning two kilometres along the border of Bilar and Loboc was created as a reforestation project in the 1960s. The forest provides a cool, shaded environment and is a popular tourist stop.



BALICASAG ISLAND

Known for its rich marine biodiversity, Balicasag Island is a popular destination for snorkeling and diving, with colorful coral reefs, tropical fish, and sea turtles.

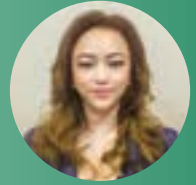
A traditional Chinese junk boat with red sails is sailing on the water in front of the Hong Kong skyline. The boat has three masts with red sails and a yellow flag. The background shows the city skyline with various skyscrapers and the Hong Kong Convention and Exhibition Centre. The water is calm and reflects the light.

HONG KONG

Hello Hong Kong

Connect & Discover

Monthathip Kitkanchana (Teddy)
Regional Director of Sales & Marketing -
International Market
TOUR EAST GROUP



Hong Kong, a vibrant metropolis on China's south coast, is a dynamic fusion of Eastern and Western cultures, offering a myriad of attractions for tourists. Its iconic skyline, studded with towering skyscrapers and neon lights, draws visitors from around the globe. From bustling street markets like Mong Kok and Temple Street Night Market to the tranquil beauty of Victoria Peak and the serene beaches of Repulse Bay, Hong Kong offers something for every traveler. The city's rich culinary scene, diverse shopping options, and vibrant nightlife further contribute to its allure, making it a top destination for Asian tourism.



VICTORIA PEAK

Victoria Peak offers panoramic views of Hong Kong's iconic skyline, Victoria Harbour, and surrounding islands. Accessible by tram or hiking trails, it's a must-visit spot for breathtaking vistas.



DIM SUM

Dim Sum is a culinary highlight, featuring bite-sized delights like dumplings, steamed buns, and savory treats, served in bustling teahouses across the city.



CHINESE NEW YEAR

The Hong Kong Chinese New Year Parade is a spectacular celebration featuring colorful floats, traditional lion dances, fireworks, and vibrant street performances, attracting locals and tourists alike to usher in the Lunar New Year festivities.

CRUISE PORTS IN HONG KONG 2 MAIN PORTS



- 1. Ocean Terminal
- 2. Kai Tak Cruise Terminal

HONG KONG

Hong Kong is a dynamic and cosmopolitan city that offers a unique blend of culture, commerce, and entertainment, making it a top destination for travellers from around the globe. It is a Special Administrative Region (SAR) of China, with a high degree of autonomy under the "one country, two systems" framework. It operates under its own legal and economic systems, separate from mainland China.

Port: Ocean Terminal
Capacity: N/A
Port: Kai Tak Cruise Terminal
Capacity: N/A



VICTORIA PEAK

Offering panoramic views of the city skyline, Victoria Peak is one of Hong Kong's most popular tourist destinations. Visitors can reach the peak via the Peak Tram and enjoy stunning vistas from the observation deck.



HONG KONG DISNEYLAND

Located on Lantau Island, Hong Kong Disneyland is a magical theme park featuring Disney characters, attractions, and entertainment for visitors of all ages.

© Disney



NGONG PING 360

A cable car ride that takes visitors from Tung Chung to Ngong Ping Village, where they can visit the Tian Tan Buddha (Big Buddha) statue, Po Lin Monastery, and explore the cultural attractions of Lantau Island.



OCEAN PARK

A marine-themed amusement park offering thrill rides, animal exhibits, and live shows, Ocean Park is a popular family-friendly attraction in Hong Kong.



SHOPPING PARADISE

Hong Kong is a shopper's paradise, with a wide range of shopping options from luxury malls to bustling street markets. Popular shopping districts include Causeway Bay, Tsim Sha Tsui, and Central.



*Victoria Peak
Hong Kong*

Our Team



JANICE HEW

Head of Reservation, Sales

SINGAPORE



BAGUS PERBAWA

Global Business Manager

INDONESIA



ANGGA PANCA

Sales Marketing
Supervisor
INDONESIA



MONTHATHIP KITKANCHANA (TEDDY)

Senior Manager
Indochina Sales
THAILAND



EMMILEY AMADEUS

Global Inbound Manager
(International & Asia Market)
MALAYSIA



JESS LIM

Senior Supervisor Global Inbound
(International & Asia Market)
MALAYSIA



NAO YOSHIDA

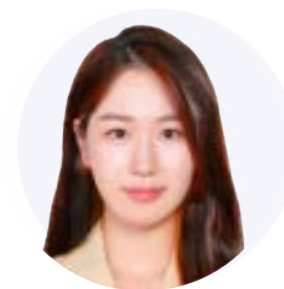
Manager

TAIWAN



FATIMA VILLA

Global Inbound
Senior Supervisor
PHILIPPINES



JINSIL LEE (LILY)

Manager

KOREA



CHIAEH AHN

Manager

KOREA



FIND US ON

LinkedIn: *tour-east*

Facebook: *TourEast*

Instagram: *toueastdmc*

Youtube: *@TourEastDMC*